



**ASTEC TWIN 150TON SILO SYSTEM - RAP-16647**

**SKU:** RAP-16647

**Condition:** Used

**Region:** East

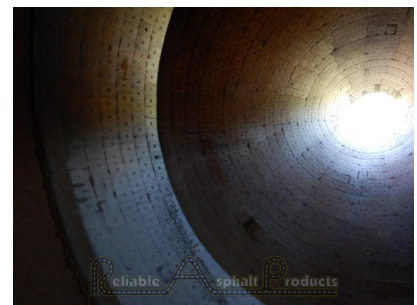
**Mobility:** Stationary

**Size (Nominal):** 150 ton

**EQ Type:** Silo System

**SKU:** RAP-16647

---





## PRODUCT DESCRIPTION

### Astec Twin 150ton Silo System

- Model year 1995
- (2) 150ton Astec silos with oil seal gates. 13' drive thru height 50' deck height
- Enclosed square batchers with night seal. Batchers lined with ceramic. Missing cylinders
- 24"x81'6" main drag slat. 75hp Rex Drive. Reject chute. Oil heat.
- Includes (Not installed) - new cast floor liners, new 6" single strand chain with slats, new head and tail bearings
- Astec flat transfer slat. 10' shaft to shaft 12'6" inlet to discharge. 20hp. Dual chain, cast floor
- Astec Lowpro 10'x90' Truck scale 3 sections