



2013 ALMIX SELF-ERECT SILO W/ DRAG SLAT CONVEYOR RAP-16102

SKU: RAP-16102

Condition: Used

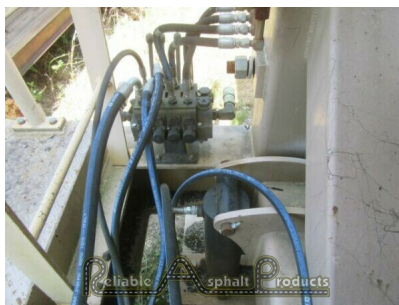
Region: East

Mobility: Portable

Size (Nominal): 250-300 TPH

EQ Type: Silo System

SKU: RAP-16102





PRODUCT DESCRIPTION

- Nominal 250-300TPH
- 150,000 tons produced lifetime
- 80ton capacity cylindrical silo with insulated tub wall and recessed cone
- Entire silo sits on load cells
- Hydraulic erect and leveling with hydraulic valve unit
- Plug in cabling, rolled up on unit
- Control box and heat controls mounted on unit
- 27" wide slat box. Dual chain 4" pitch 5 ½" slats
- Reject chute in drag slat
- 60hp TXT8 25 to 1 ratio
- Gob hopper on drag slat with Bindicator
- Electric heat on floor and silo cone
- Tri axle portability 11R22.5 tires